

Expansion of Bahnhofstrasse, Buswil

01.01.2024



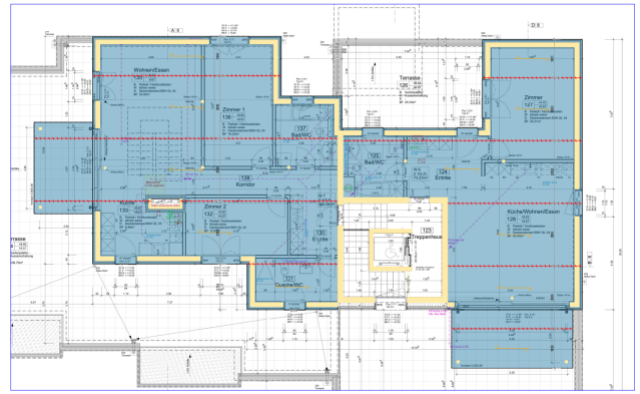
The existing apartment building from the 1980s on Bahnhofstrasse in Buswil was expanded with an addition and raised by one story with a penthouse level. Using the TS3 system, the addition was able to fully utilize the building code limits without sacrificing ceiling height due to joists.

The Project

The construction project addresses the issue of densifying existing developments. A new parking garage was built, an extension was added using solid construction methods, and an additional story was added via a penthouse level. The additional story was constructed as a timber structure spanning the entire building.

Construction Method

The exterior walls were constructed using a wood-frame system. With the exception of the load-bearing apartment partition walls, all interior walls are non-load-bearing. The flat roof was constructed using the TS3 system made of CLT panels and is supported internally only by columns. The TS3 ceilings extend seamlessly from the warm to the cold zones to cover the spacious terraces. At the client's request, the ceiling in one apartment was sheathed with gypsum board and plastered, while in the second, the CLT ceiling will remain exposed.



Construction data

- Number of floors: 1
- Gross floor area: 228 m²
- Cross-laminated timber: 46 m³
- TS3 technology: 75 m³

Architecture

Nerinvest AG, Murten

Client

Nerinvest AG, Murten

Timber engineer

Timbatec Timber Engineering Switzerland AG, Zurich

Timber construction

Sieber Holzbau AG, Utzigen